


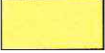



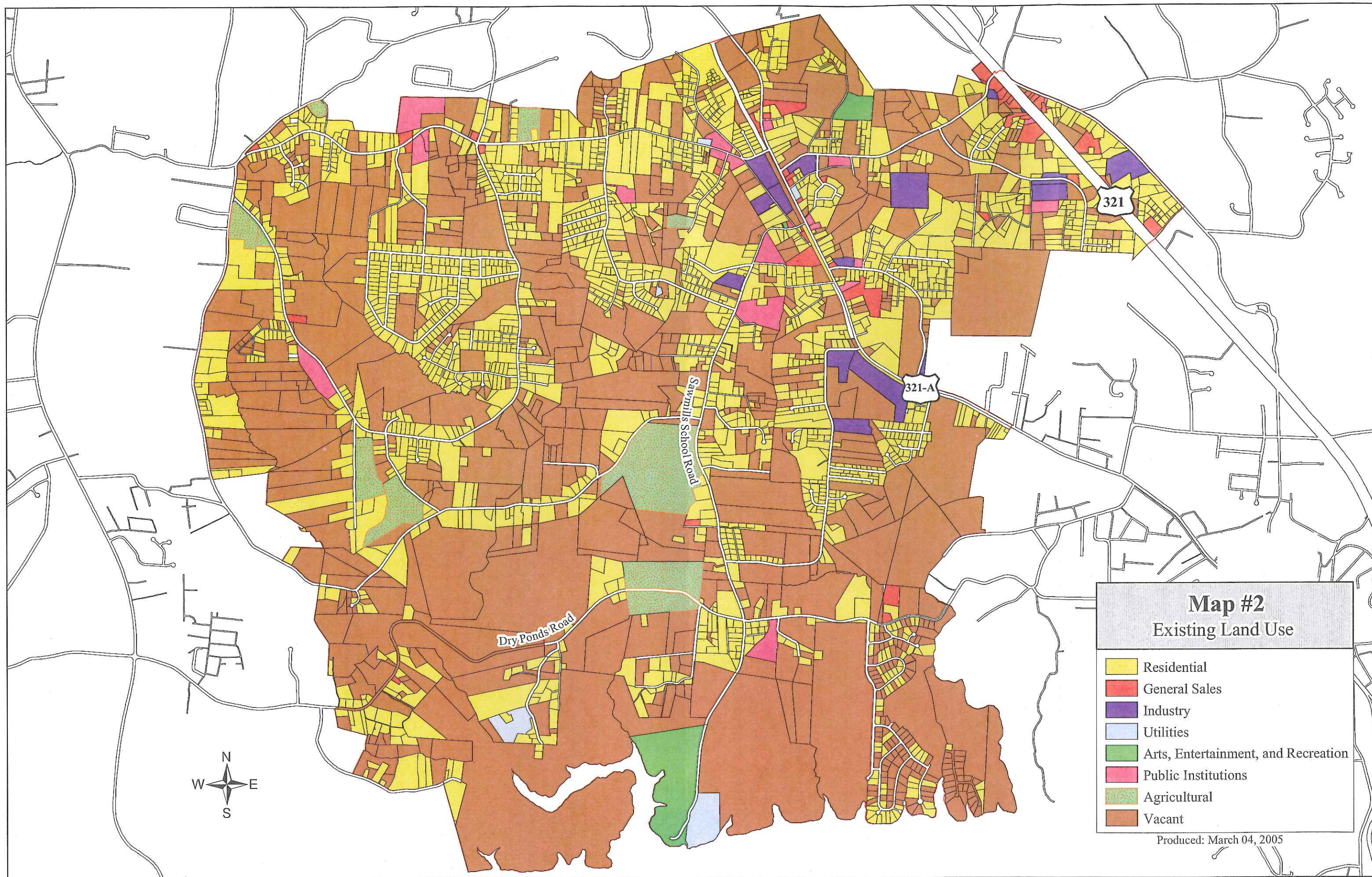
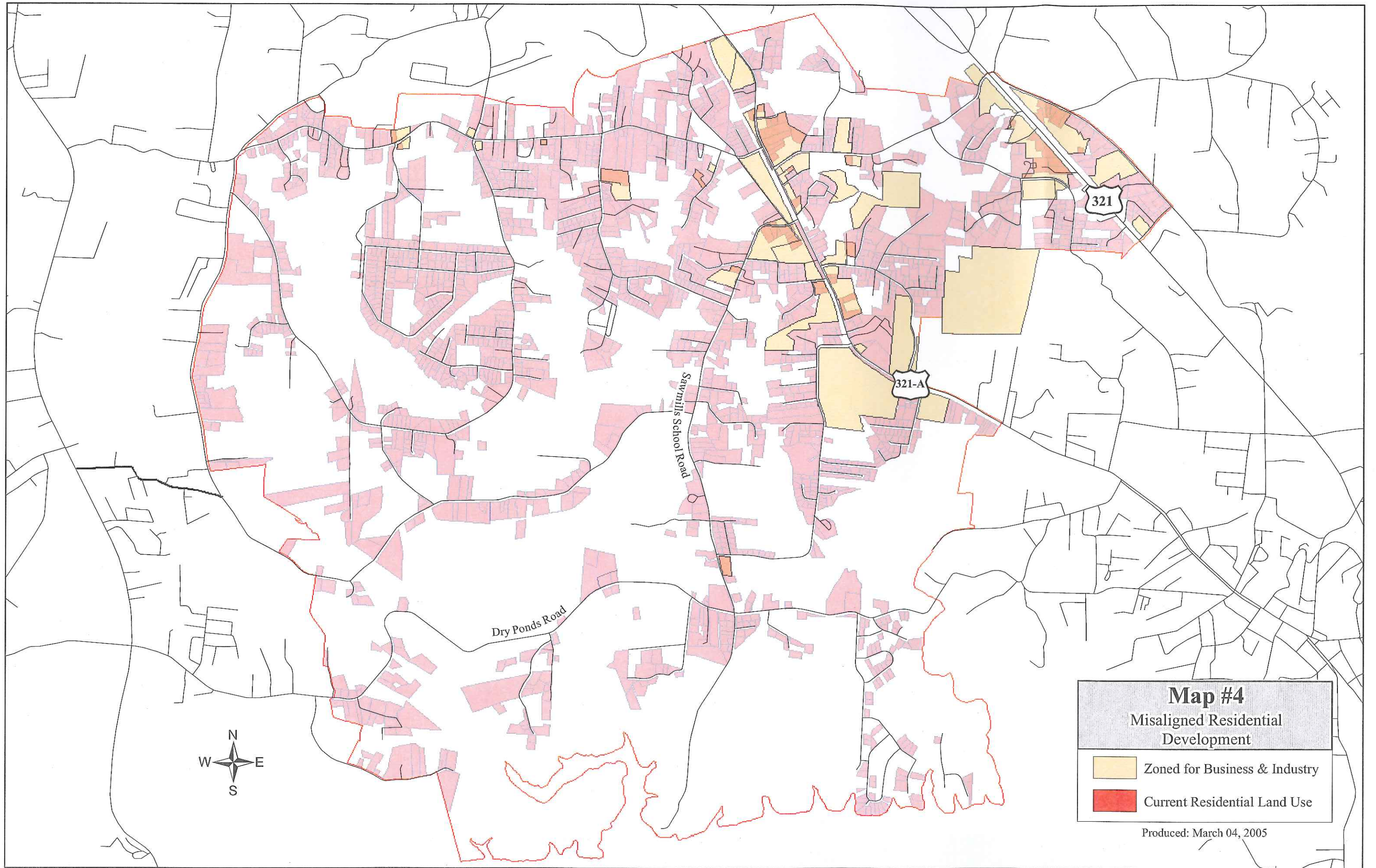


Map #1
Current Zoning

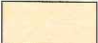
	G-M		R-15
	H-B		R-20
	H-I		RA-20
	N-B		


Produced: March 04, 2005



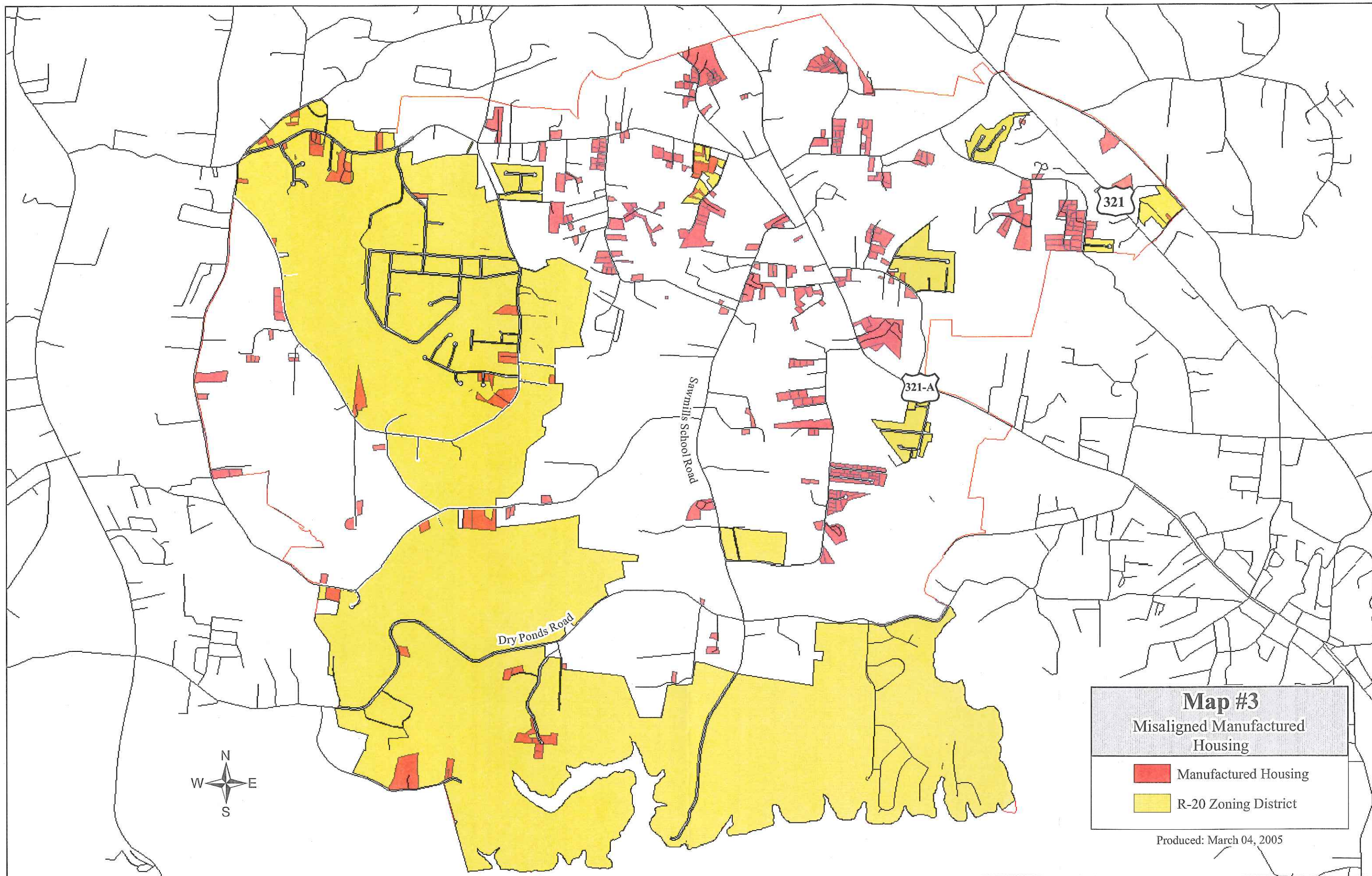


Map #4
Misaligned Residential
Development

 Zoned for Business & Industry

 Current Residential Land Use

Produced: March 04, 2005



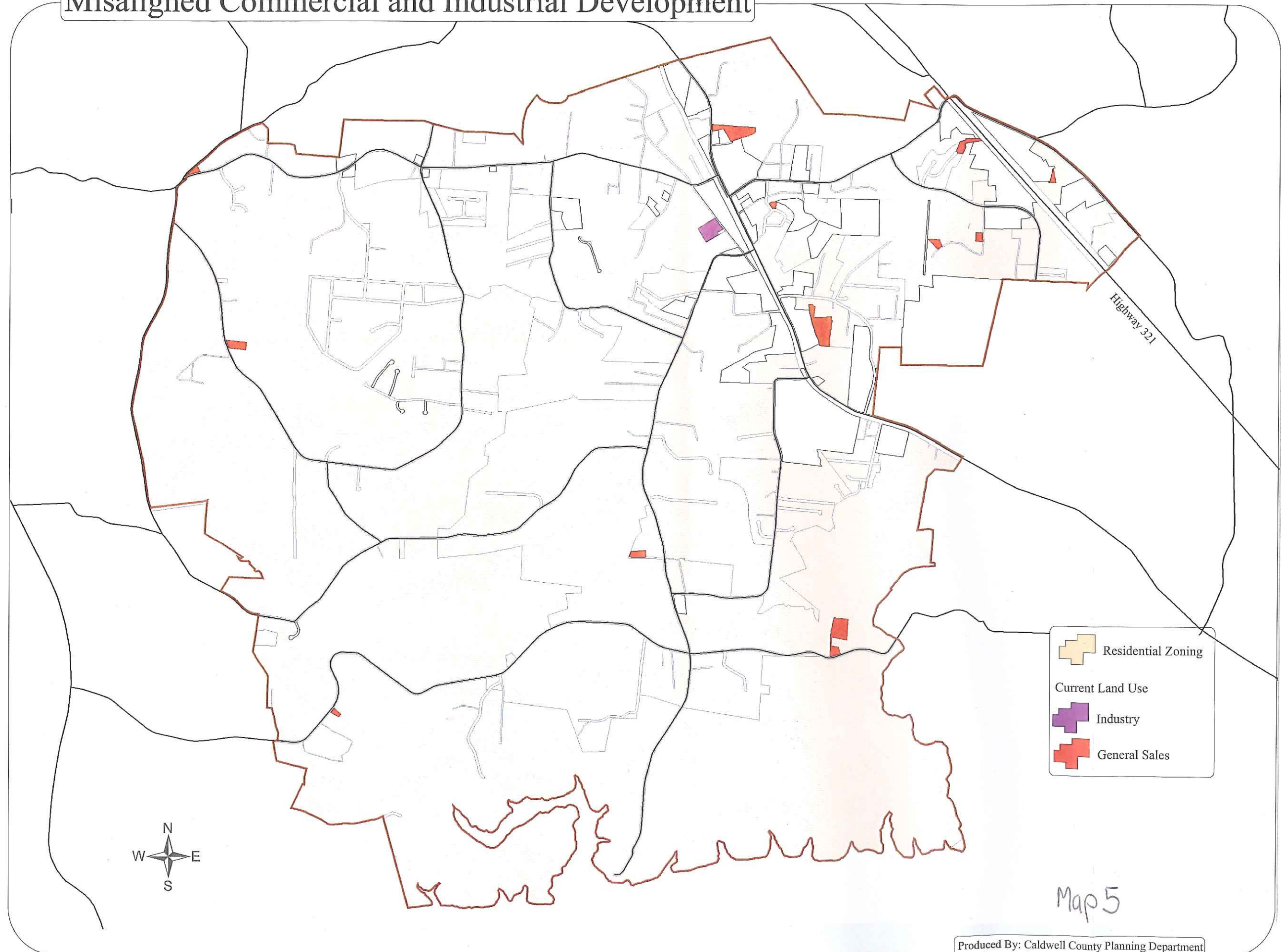
Map #3

Misaligned Manufactured
Housing

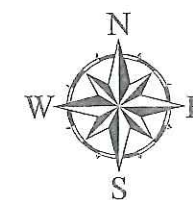
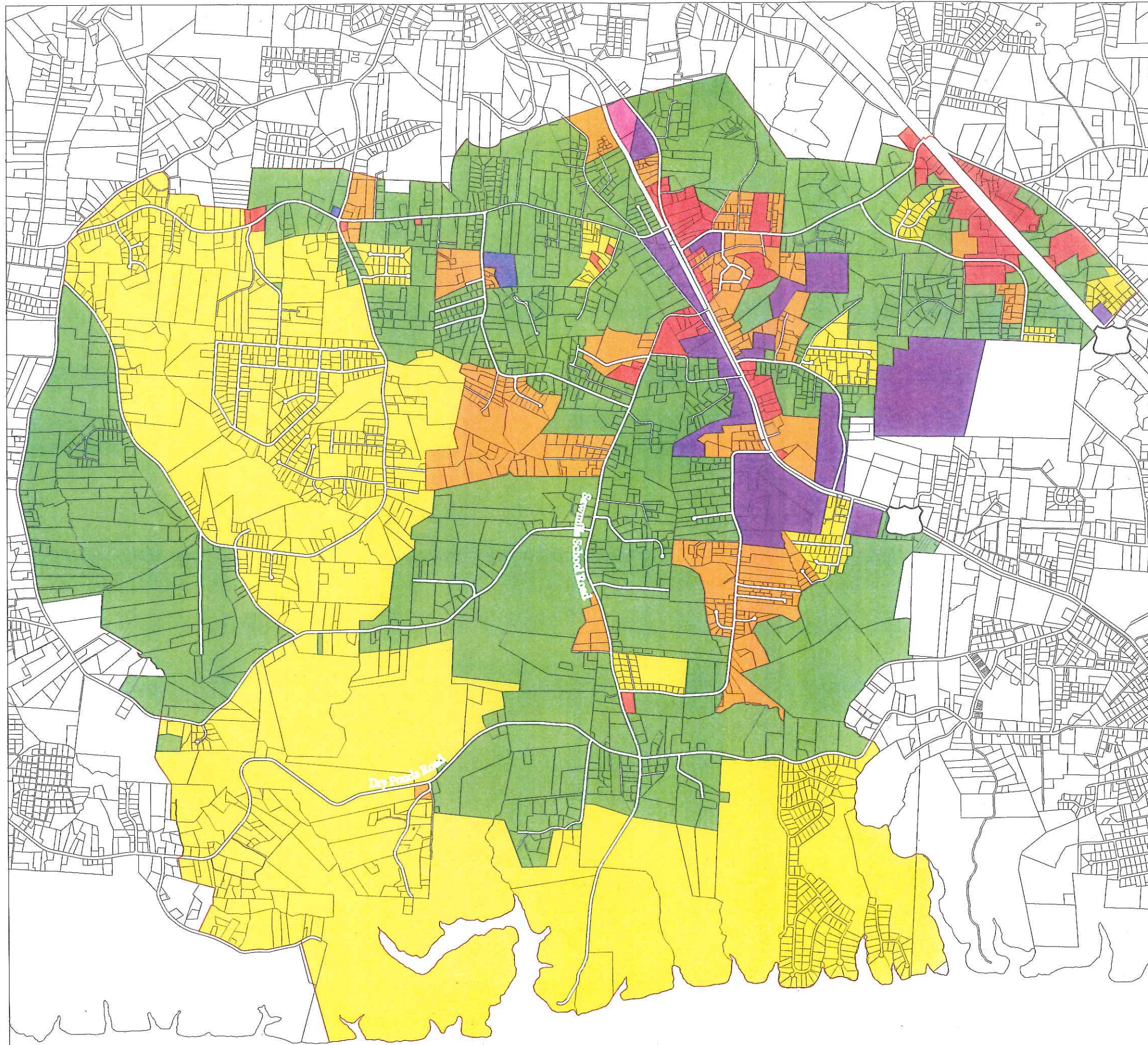
- Manufactured Housing
- R-20 Zoning District

Produced: March 04, 2005

Misaligned Commercial and Industrial Development







Does anyone remember what happened between June 2004 & May 2005? This map was intended to be Map 7 - "ultimate land use," like a future land use map, but I don't think it was in the final adopted plan. I found only this draft w/o a legend.



Map 7 - ultimate land use

Potential Land for Development

Highway 321



Current Land Use

-  Agricultural
-  Vacant

Produced By: Caldwell County Planning Department
Data Source: Primary Data Collection, July 2004